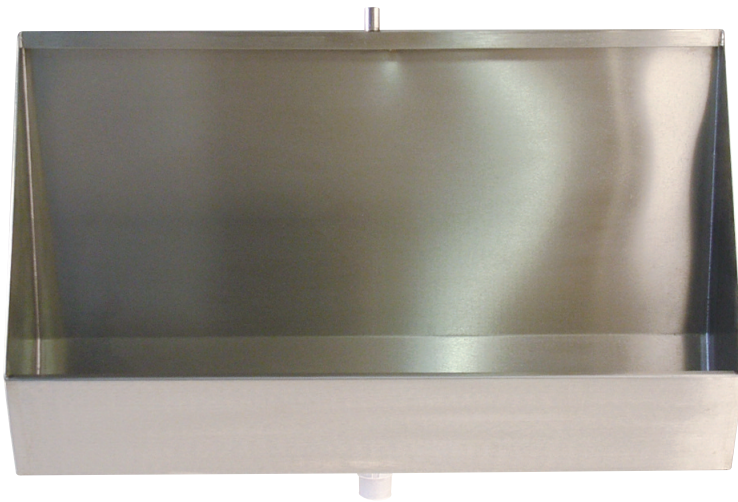




## CONNISTON Trough Urinal Kits

Product Code: UR020



Conniston vandal resistant urinal kits come complete with plastic cistern, 22mm stainless steel, square sparge pipe and down pipe and 1 1/2 inch BSP waste outlet. The trough is fabricated from 304 grade, brushed stainless steel and comes with welded 3mm thick end panels and welded-on square sparge pipe. Conniston urinals can also be supplied with boxed ends, down/pipe cover and left hand, right hand or center outlet.

## CHUR Individual Bowl Urinals

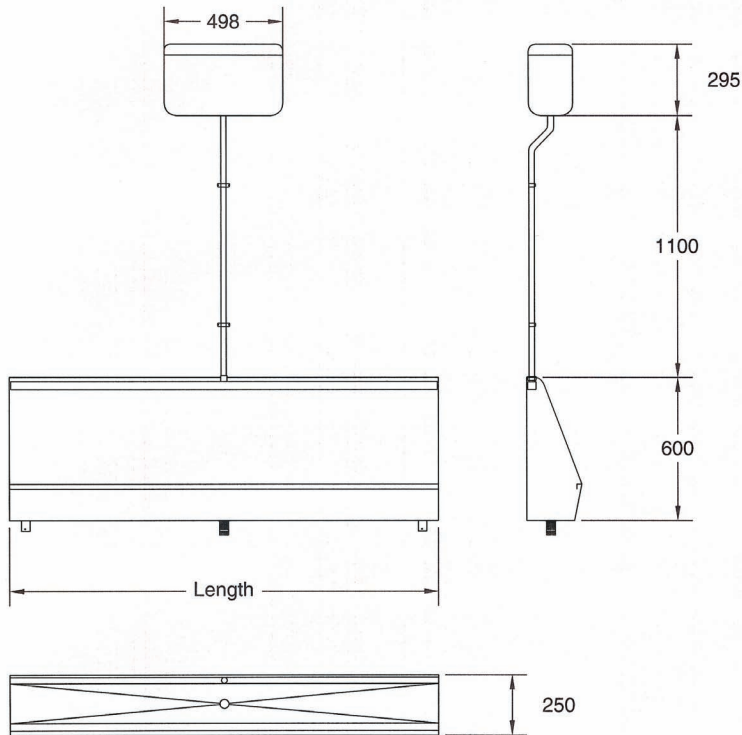
Product Code: UR009

The Chur urinal is an individual bowl urinal with top inlet and exposed outlet. Fabricated from 304 grade, high polished stainless steel, the Chur urinal is an ideal replacement for porcelain urinals. Pipe work is available for ranges of 1-4 units



## CONNISTON Trough Urinal Kits

Product Code: UR020



### Installation

The urinal trough should be fastened to the wall through the fixing holes provided. The down pipe can then be installed with the clips and connectors supplied, the cistern can then be mounted and the waste outlet connected.

### Maintenance

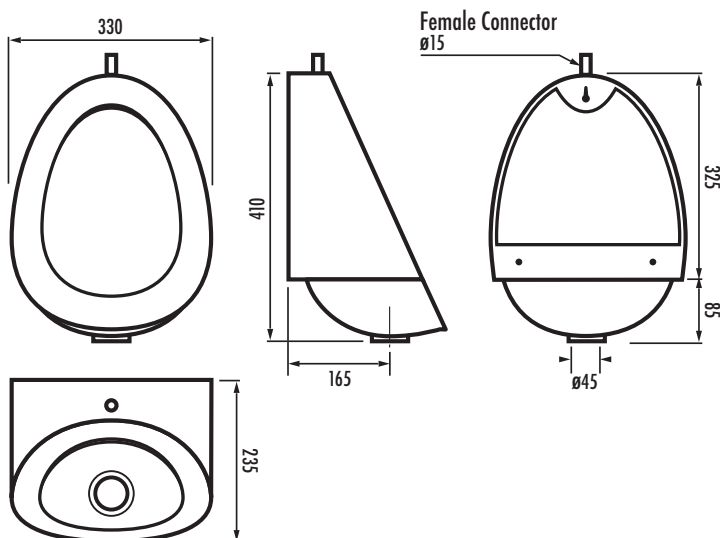
Clean with normal toilet brush and warm soapy water. Do not use bleach or cleaners unless specifically intended for use on stainless steel.

### Optional Extras for Conniston urinals

UR00106	600mm Conniston urinal kit.
UR00109	900mm Conniston urinal kit.
UR00112	1200mm Conniston urinal kit.
UR00115	1500mm Conniston urinal kit.
UR00118	1800mm Conniston urinal kit.
DPS2	Down pipe cover.
SSC045	Stainless steel cistern 4.5 liter.
SSC090	Stainless steel cistern 9 liter.
SSC135	Stainless steel cistern 13 liter.
WU8	Chrome plated waste outlet 1½ inch.
WU2M	Chrome plated hinged waste outlet 2 inch.
URA093	Boxed end panels.
CC01	Corner box section for L shaped urinals.
AUP.R	Sensor controlled flush kit.

## CHUR Individual Bowl Urinals

Product Code: UR009



### Installation

The Chur urinal can be hung from a screw through the cut out at the top and then fixed through the bracket on the rear. Inlet connection requires a push fit adapter, which comes with the urinal, to connect to 15mm standard pipe work. Chur urinals are also supplied with a 1 ¼" BSP waste outlet to connect to P-traps or bottle traps (not included).

### Maintenance

Clean with normal toilet brush and warm soapy water. Do not use bleach or cleaners unless specifically intended for use on stainless steel.

### Optional Extras for Chur urinals

U009R1	Pipe work kit, range of 1.
U009R2	Pipe work kit, range of 2.
U009R3	Pipe work kit, range of 3.
U009R4	Pipe work kit, range of 4.
CIS045	Plastic 4.5 liter cistern.
SSC045	Stainless steel 4.5 liter cistern.
C0909	Chrome plated elbow to take inlet through wall.
AUP.R	Sensor controlled flush kit.
AUP8	Individual urinal flush.
AUP2	Recessed individual urinal flush